

# Cynomolgus GPRC5D Protein-VLP

Cat. No. GPR-CM05P



## Description

<b>Source</b>	Recombinant Cynomolgus GPRC5D Protein-VLP is expressed from HEK293. It contains Met1-Cys300.
<b>Accession</b>	A0A2K5W6I7
<b>Molecular Weight</b>	The target protein has a predicted MW of 35.10 kDa.
<b>Endotoxin</b>	Less than 1 EU per µg by the LAL method.
<b>Purity</b>	> 95% as determined by HPLC

## Formulation and Storage

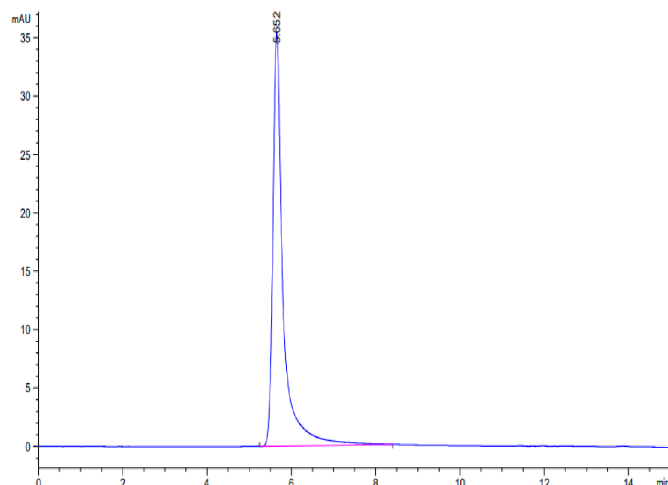
<b>Formulation</b>	Supplied as 0.22 µm filtered solution in PBS, 300 mM L-Arginine (pH 7.4). Notice: If you need it for immunization, water-soluble adjuvant is recommended.
<b>Storage</b>	Valid for 12 months from date of receipt when stored at -80°C. Recommend to aliquot the protein into smaller quantities for optimal storage. Please minimize freeze-thaw cycles.

## Background

Chimeric antigen receptor (CAR) T cells, a type of cell-based immunotherapy, have shown some promising results in multiple myeloma, a bone marrow cancer. The orphan G protein-coupled receptor, class C group 5 member D (GPRC5D), normally expressed only in the hair follicle. Using quantitative immunofluorescence, we determined that GPRC5D protein is expressed on CD138 MM cells from primary marrow samples with a distribution that was similar to, but independent of, BCMA.

## Assay Data

### SEC-HPLC



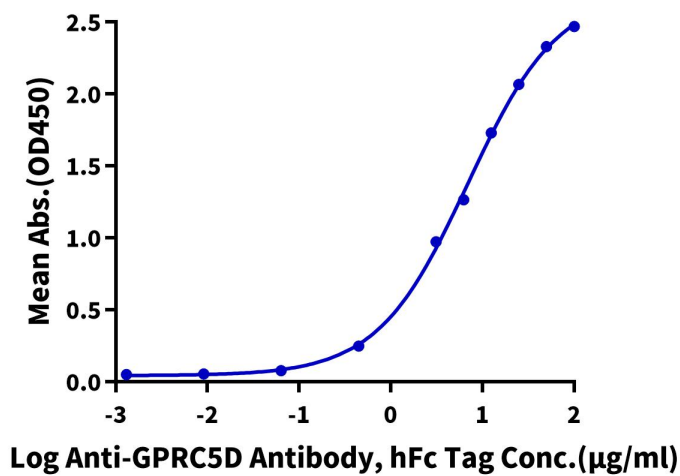
The purity of Cynomolgus GPRC5D VLP is greater than 95% as determined by SEC-HPLC.

### ELISA Data

## Assay Data

**Cynomolgus GPRC5D VLP ELISA**

0.5µg Cynomolgus GPRC5D VLP Per Well



Immobilized Cynomolgus GPRC5D VLP (100 µl/well) at 5 µg/ml (100 µl/Well) on the plate. Dose response curve for Anti-GPRC5D Antibody, hFc Tag with the EC50 of 6.91 µg/ml determined by ELISA.